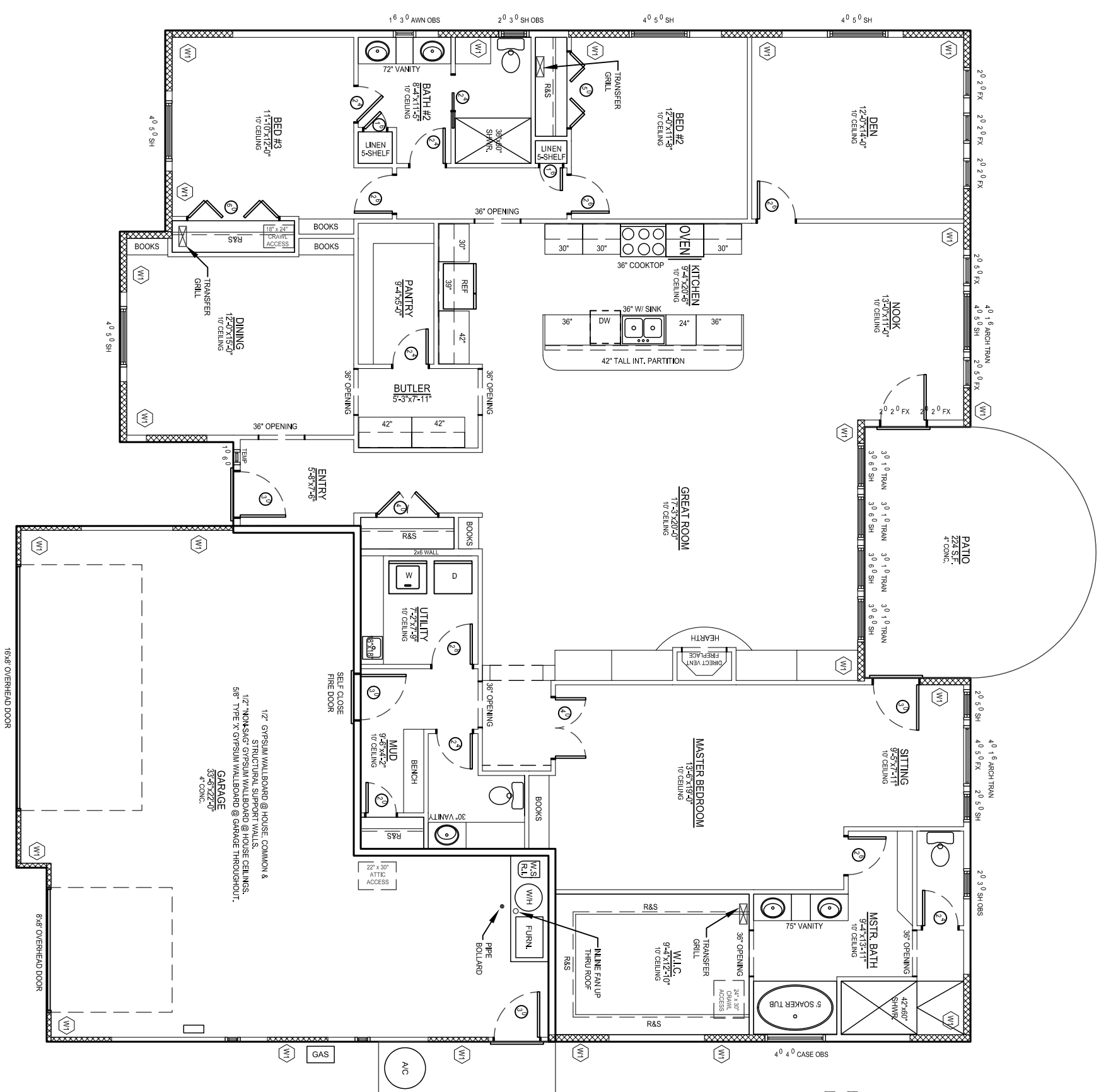


GENERAL NOTES

THE CONTRACTOR IS RESPONSIBLE TO VERIFY ALL INFORMATION SHOWN BEFORE BEGINNING WORK AND TO NOTIFY US IMMEDIATELY IF ANY DISCREPANCIES ARE FOUND.

ALL INFORMATION CONTAINED WITHIN THESE DRAWINGS AND ALL ENGINEERING CALCULATIONS ARE INTENDED TO MEET OR EXCEED 2009 IRC.

ALL DESIGN CRITERIA NOT SHOWN ON THESE PLANS ARE TO CONFORM TO THE 2009 IRC.



SHEAR WALL SCHEDULE

- W1 APA RATED SHEATHING - 6d COMMON OR GALVANIZED BOX NAIL @ 6" O.C. (PERIMETER) 12" O.C. (FIELD) PERIMETER OF ALL PANELS MUST BE BLOCKED
- W2 16 GA. X 1 3/4" STAPLES @ 3" O.C. (PERIMETER) 6" O.C. (FIELD) PERIMETER OF ALL PANELS MUST BE BLOCKED
- 1. SHEAR PANELS AT CORNERS TO BE Nailed PER IRC CODES FROM THE CORNER OF ANY CORNER, AND EVERY 12" THEREAFTER
- TYPICAL SHEATHING NAIL PATTERN:
- 6d NAILS @ 6" O.C. (PERIMETER) 12" O.C. (FIELD) OR 16 GA. X 1 3/4" STAPLES @ 3" O.C. (PERIMETER) 6" O.C. (FIELD) UNLESS NOTED OTHERWISE
- VERIFY IRC CODES IF ALTERNATE SHEAR PANELS ARE USED

WALL LEGEND

- INDICATES INTERIOR BEARING WALL
- INDICATES EXTENT OF SHEAR WALL

USE ADVANCED FRAMING TECHNIQUES, ENERGY CORNERS AND INSULATE ALL HEADERS

USE 1/2" GYP. BOARD BEHIND SHOWERS, TUBS AND FIREPLACES ON EXTERIOR WALLS, TYPICAL

ALL EXTERIOR WALLS TO HAVE CONTINUOUS SHEATHING OF 7/16" OSB

MAIN FLOOR PLAN

SCALE: 1/4" = 1'-0"

THIS HOME TO BE ENERGY STAR CERTIFIED

1833 WINDYBROOK AVE.
BOISE, IDAHO 83716
PH. # (208) 359-4420
FAX # (208) 340-9875
www.tedmason.com

REV	DATE	DESCRIPTION	BY

LOT / BLOCK / SUBDIVISION

TED MASON SIGNATURE HOMES

HOME - SINGLE UNIT

FLOOR PLAN

MERIDIAN / ADA IDAHO

AREA	SQ. FT.
MAIN FLOOR	
UPPER FLOOR	
BONUS ROOM	
BASEMENT	
TOTAL	

CONC.	SQ. FT.
GARAGE	
BACK PATIO	
FRONT PORCH	
SIDEWALK	
AC Pads & 8" ODP	
DRYWELL	
TOTAL	

DATE		SCALE	AS NOTED
DRAWN BY		DESIGNED BY	
CHECKED BY		JOB NO.	

PRELIM SHEET 3 OF 7